

Model7222T

QuickLink V.35 10Base-T Ethernet Bridge DTE Mode

Product manual

1. Summarize

Model7222T Ethernet network bridge is a equipment that through V.35 to implement Ethernet low cost connection. Adopt DTE interface style , supply timepiece from DCE equipment, support rate reach to 10Mbps. Ethernet interface adopt 10Base-Tstandard, Support 10M full duplex and half duplex protocol.Model7222T support 10000 MAC address filtrate form, support 256 frame data low memory, Filtrate and convert rate reach up to15000pps.

WAN interface: V.35

Interface style: DTE

Data rate: 0-10Mbps

Supply 10Base-T Ethernet interface

Support 10M full duplex and half duplex protocol

Support 10000个MAC address

Filtrate and convert rate reach up to15000pps

Support 256 frame data slow memory

Support timepiece: DCE equipment timepiece

Power consume: 1.5 W (220V AC, 5V DC)

Temperature: -40 to +85

Humidity: 10% to 90% no coagulate

Size: 22cm(L)*15cm(W)*4cm(H)

Weight: 240g

2. Ethernet interface technique guideline

Interface style: 10Base-T full/half duplex

Protocol standard: IEEE802.3 (non-support VLAN function)

Interface rate: 10M

Connector: RJ-45

Coding : Manchester code

Connection: connect PC with twisted-pair. Connect HUB/SWITCH with vertical line.

3. Data port interface technique guideline

Interface style: V.35

Interface style: DTE

Support timepiece: DCE equipment timepiece, 0-10Mbps

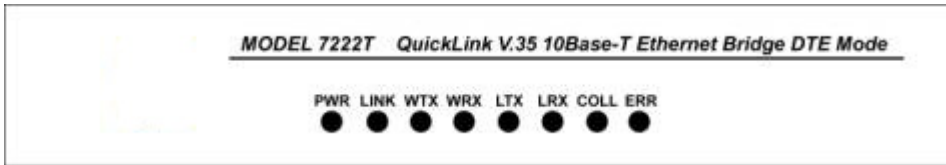
Linker: DB25/female

Line code: NRZ

Connect line: V.35 DB25-M/34 Cable

4. Panel explain

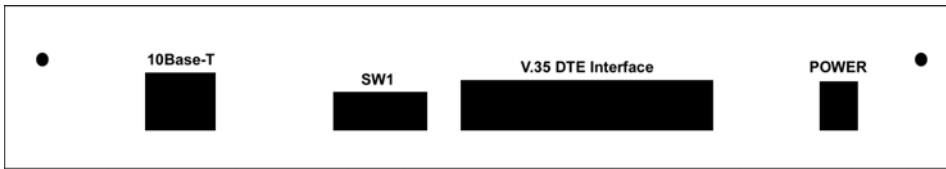
The product front panel sketch map:



The product front panel sketch map:

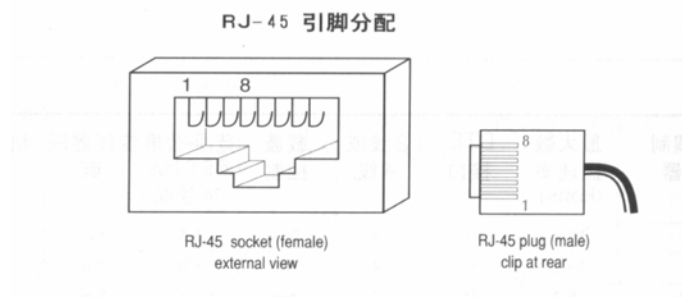
PWR	Power indicator. Brightness if electrify.
LINK	Ethernet connection constitute.
WTX	E1port send data indication
WRX	E1port receive data indication
LTX	Ethernet port send data indication
LRX	Ethernet port receive data indication
COLL	Ethernet port conflict indication.
ERR	Equipment alarm indication.

The product back panel sketch map:



5. Interface define

a) Ethernet interface RJ-45 pin define

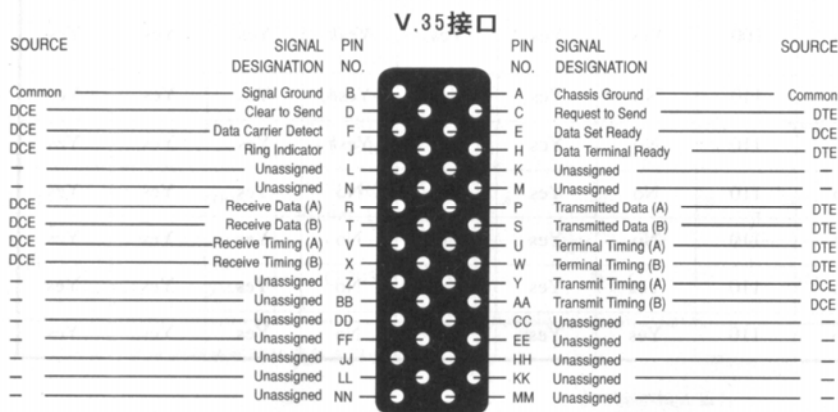


Grade NO.	Function define	Signal direction
1	TX+ (send data +)	Output
2	TX- (send data -)	Output
3	RX+ (receive data +)	Input
4	NC (null)	
5	NC (null)	
6	RX- (receive data -)	Input
7	NC (null)	
8	NC (null)	

b) V.35 interface define

DB-25 PIN define:

Grade NO.	Function descriptin	I/O
1	GND	
2	TDA	I
3	RDA	O
5	CTS	O
6	DSR	O
7	GND	
8	DCD	O
9	RCB	O
10	NC	
11	XTCB	I
12	TCB	O
14	TDB	I
15	TCA	O
16	RDB	O
17	RCA	O
18	NC	
19	NC	
20	NC	
21	NC	
22	NC	
23	NC	
24	XTCA	I
25	NC	



6. DIP switch setup

a) Working mode setup

NO.1: OFF: force full duplex ON: 10Base-T standard

b) Data compress setup

NO.2: OFF: compress ON: not compress

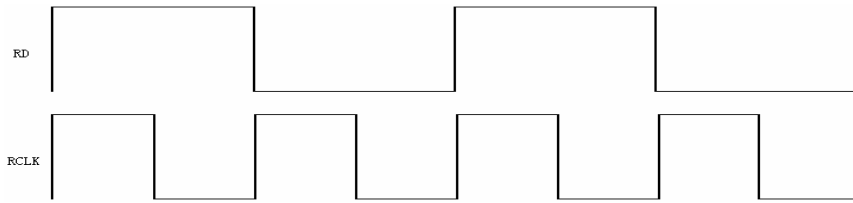
c) Phasic adjust setup

V.35 interface receive timepiece phasic adjust

NO.3:

OFF——cut timepiece

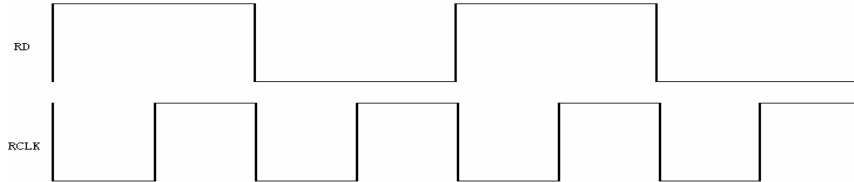
ON—schedule:



NO.4:

OFF—cut timepiece

ON—schedule:

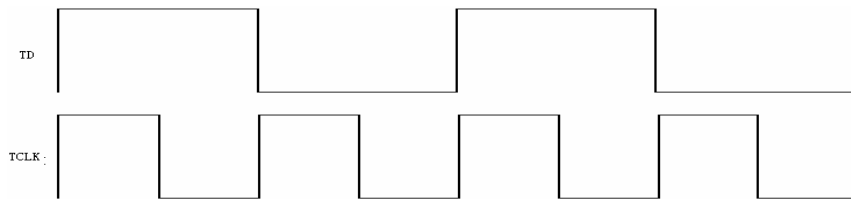


V.35 interface send timepiece phasic adjust

NO.5:

OFF—cut timepiece

OFF—schedule:



NO.6:

OFF—cut timepiece

ON—schedule:

